

SCMA

Newsletter

السلام عليكم
peace be upon you



Welcome!

To our first edition of the SCMA Newsletter. Insha'Allah it will be our aim to keep the local community informed of all activities within the

The Old Magistrate Courthouse was purchased in 2012 through funds generated by Muslim families in Sutton Coldfield. With the Grace of Allah swt and the generosity of our community, the loans were paid off within two years of the purchase of the premises. Since its purchase, the place has been regularly used for daily prayers, Taraweeh and supplementary teaching through Tasleem academy and other partners in education.

The attendance has grown year on year and the Masjid has become the hub of religious and community activities. As the Courthouse had no proper facilities of toilets and washing at ground floor level, the working committee decided to carry out improvements for the entrance, the corridors and wudu & toilet facilities. We are blessed with the talents of Brother Mahmood Esmail, an architect by profession and a local resident who was asked to draw up the plans for the improvements. He has several years of expertise in this area and took on the role to project manage the scheme. Under his direction, the works were tendered and Nigel Ford, from Evolve builders was chosen. He is highly recommended for his work locally and he took on the task following the undertaking of a survey and assessment. The work started before Ramadhan and carried on during the Blessed month with minimal disruption to the users of the Masjid.

The cost of the project has been estimated at £150k and work started with secured funds of £80k at that stage. The donation drive during Ramadhan was very successful with the community donating very generously to achieve the target sum. Alhamdulillah this has been a humbling experience and may Allah SWT reward immensely all those involved in the project and all who have donated immensely. Ameen

Sadaqa al-Fitr

Our largest Eid congregation was held this year and Sadaqa al-Fitr of £2600 was donated to deserving charities in UK, Bangladesh and to the recent Grenfell tragedy victims.

Classes

There are now thriving educational activities at the courthouse with Tasleem academy, ILM School, Arab peacock interactive learning and Ustadh Marwan teaching Islamic etiquettes, Holy Quran and Arabic language. The SCMA is very grateful to all class tutors for maintaining standards and helping the local community.

Masjid Donation

Help the SCMA with a one off donation or by setting up a monthly standing order.

Bank Details: HSBC UK

Account Name: SEMWA

Account: 81556002

Sort Code: 40-43-28

PLEASE DONATE GENEROUSLY

A New Brand

We have been working on the SCMA branding and we are grateful to brothers Rafaquat Hussain, Mahmood Esmail and Hassaan Afridi for leading on this. We have enhanced the crescent shape and included colours that are reflective of our rich Islamic heritage. Insha'Allah the design will be reflected in our Masjid as we work on the refurbishments. The full story of the details behind the design will be shared on our website.

Community Progress

SCMA continues to promote brotherhood, tolerance and good relations with neighbours. There are regular interfaith forum meetings with local Christian church leaders. A recent interfaith & Iftaar was organised that was very well attended and received positive feedback from local residents and councillors. Food was donated by the community and presented to The Big Feed and Amirah foundation.

Dosti Group

As part of the ongoing commitment to serve, the community Sister Rashda is kindly launching the "Dosti Group" which is aimed at our respected elder ladies. It will provide the opportunity for them to get together in a social setting, meeting existing friends and making new ones. Sister Runa has also established a mother and toddler group that now meets regularly at the Masjid.

Sutton Coldfield Muslim Association (SCMA)

Courthouse, Lichfield Road (Access off Anchorage Road), Sutton Coldfield. B74 2NS
Registered Charity 1020820

Get Involved

Why not help the SCMA by volunteering, giving up some of your time and getting involved in activities and events? This is a worthy and rewarding cause where you can assist in improving our services to the community.

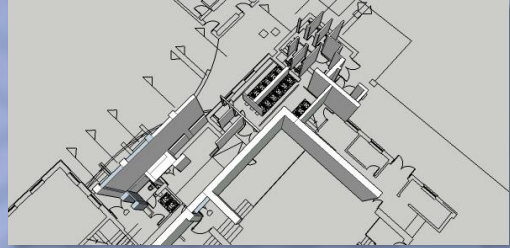
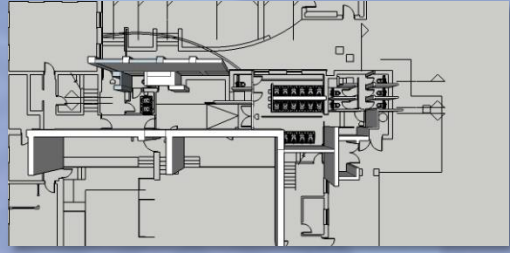
You can also support financially by considering the following:

- If you are already a member of the association and pay regularly, you could double your efforts for the next few months.
- If you are not a member, please fill in a form to become one and start paying ASAP. This will give much needed regular income to the masjid.
- Please donate for the Masjid improvement project on behalf of your loved ones who may not be in this world as Fi Sabilillah.
- Please provide Qarz e hasna or loan to masjid that will be paid back in next couple of years to you.

On-going improvements

Throughout the year, existing classrooms have been fitted with air conditioning/heating units. This has benefited by reducing the utility bills. The fire system has also been updated and certified. The CCTV has also been upgraded at the premises.

3D Views of proposed works



Early developmental sketch studies for the new entrance area, WCs and Ablution Units.

Works are now progressing apace on-site.

Imams

3 Imams share the daily Salah: Maulana Adam, Mufti Abdullah Chaudhary and Maulana Abdul Rahman. They also take part in promoting tolerance within the community.

Masjid Renovation

The new works involves working within the constraints of the existing structures and services of the Courthouse. Our proposals encompass rear entrance area improvements to facilitate better access for all users. It involves the complete strip-out of the existing plant room, formation of new door opening with steps leading to new WC facilities; 5 cubicles and a cleaner's sink area. In addition, a new boiler and water storage tank will be installed to provide hot water and underfloor heating to the main wash area. The whole of this improvement area will benefit from new lighting, floor, wall and ceiling finishes.

In summary the new improvement works, which covers a net area of 102.5m² will provide, in total:

17 wash-stations
Widened transitional corridor
1 no shower

Designated shoe areas
7 no WCs, including 1 accessible type



Sponsors



Sutton Coldfield Muslim Association (SCMA)

Courthouse, Lichfield Road (Access off Anchorage Road), Sutton Coldfield. B74 2NS
Registered Charity 1020820